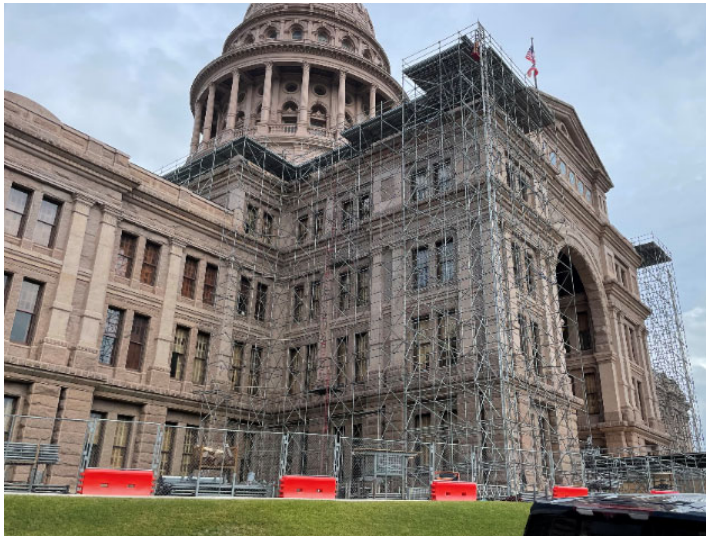


Texas Capitol Roof Replacement and Rehabilitation

Project Update, 1/20/2023



The south wing has been fully scaffolded. The north side of the east wing has been scaffolded, and now that we are in session, the south side of the east wing will continue between the hours of 7 pm to 7 am. The scaffolding is light in appearance, because it only is intended to provide fall protection at the edges of the roof, and a platform for workers to reach the gutters.

Staging platforms have been placed at building corners to store material going onto the roof, and demolition material coming off of the roof. Small motorized

lifts are being used at each of these staging platforms. This allows direct access to work locations, and minimizes walking across the new roof, once installed.



The dome interior has been cleared of 200 bags of trash and pigeon guano, safely removed, and the space cleaned thoroughly.

Decking is being added to this space for improved access safety, and to support scaffolding to access masonry vaults overhead, for repointing.

Openings in the dome will be sealed to prevent pigeon infiltration, they are finding their way in through remarkably small openings.



The south pediment will soon have its top joints sealed with lead tees to prevent water from entering these "skyward-facing" joints. This is particularly important to prevent damage from freeze-thaw cycles, and to protect the iron anchors that tie the masonry together deep in the wall.

On the roof, through November and December, technicians were certified to ensure they can properly solder copper seams, exploratory openings were made at the roof deck and gutters to examine underlying conditions, and mockups of design details were constructed for review.



The 1949 and 1992 copper roofing is being removed and recycled by a facility selected based on highest price offered. All copper roofing not retained by the State is being recycled; there is no direct sale to the public planned as a reclaimed material.



1/4" plywood underlayment will be placed on top of the historic wood decking to provide a smooth, consistent surface for the copper to lay on, without creating any condensation issues in the deck or clearances issues around any curbs. This will also absorb the impact of hail, minimizing dents in the copper.



Gutter carpentry is underway, being built into the gutter carved into the top block of granite.

The gutter metal will be installed starting in early February. By mid February, shiny new copper will be placed on the roof, to the west of the dome.

Details of the gutter were considered to ensure that water never backs up onto the roof, and that we maximize the 1888 downspouts to bring water off the roof. We are constructing as strong a roof as feasible, with strong and frequent connection points. Older corrosive fasteners are being sealed to prevent rust.



Detailing of the four corner "pavilions" will be particularly challenging due to their many ridges, transitions, and curved roof decks. Test openings are being made now, and existing conditions examined to work out the best details.